



Alcove

The 'room in a room' is a concept that Vitra has intensively pursued over many years in collaboration with the designers Ronan and Erwan Bouroullec. The idea of mobile micro-architectural elements has led to a wide variety of designs, among which the Alcove Sofa stands out as one of the most remarkable.

The various Alcove sofas were conceived for open-plan offices, where they provide sheltered, private spaces in busy or hectic surroundings. This makes them a perfect place to withdraw for concentrated work or small meetings.

The different models in the Alcove family can be variably combined, thus offering a diverse range of possibilities for organising open-plan offices without having to install fixed structures. This enables the creation of cohesive central areas in open office environments – Meet & Retreat zones with a unified aesthetic.



Ronan & Erwan Bouroullec

The brothers Ronan and Erwan Bouroullec live and work in Paris. Their oeuvre ranges from small everyday objects to architectural projects. They have worked with Vitra since 2000 and have contributed numerous designs to both the office and home collections.

1	Alcove	12-15	Alcove, Alcove Highback, Alcove Xtra High Sofa	22-24	Alcove Highback System
2-5	Configurations	16-17	Alcove Plume Contract	25-27	Cover materials
6-7	Various heights	18	Alcove Highback Work	28	Care instructions
8-9	Alcove overview	19-21	Alcove Cabin		
10-11	Types of upholstery				



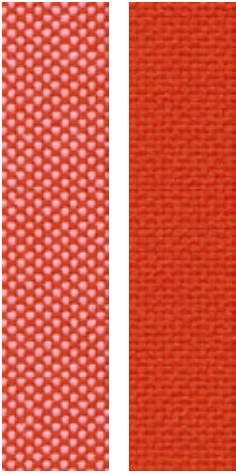
Two Alcove Highback Three-Seaters with Laser fabric in the colour warm grey/ivory, Work upholstery.



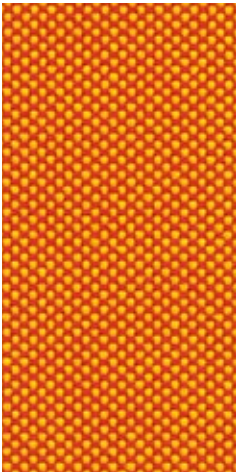
Alcove Sofa Two-Seater with Laser fabric in the colour ice blue/ivory and Love Seat with Laser fabric in in the colour light grey/forest, both with Lounge upholstery. Ottoman with Laser fabric in the colour ice blue/moor brown.



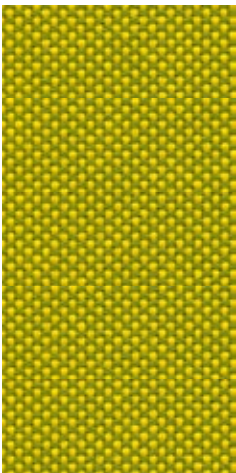
Alcove Highback Three-Seater with Laser fabric in the colour petrol/moor brown, Lounge upholstery.



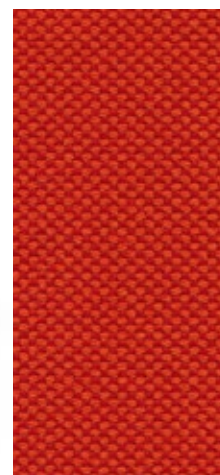
Alcove Plume Contract Two-Seater with Laser fabric in the colour pink/poppy red and Fauteuil in the colour poppy red.



Alcove Plume Contract Highback Three-Seater with Laser fabric in the colour yellow/poppy red.



Two Alcove Plume Contract Three-Seaters with Laser fabric in the colour yellow/pastel green.



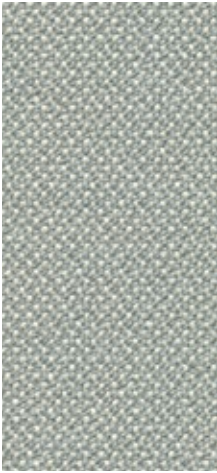
Alcove Highback Work with Laser fabric in the colour red/poppy red and tablet desk with leather surface in the colour sand, Work upholstery.



Alcove Cabin Xtra High Three-Seater with Laser fabric in the colour red/moor brown, Work upholstery.



Alcove Highback System, configuration with two side elements and one central element, Laser cover fabric in the colour nero/cognac, Lounge upholstery.



Alcove Highback Work with Credo fabric in the colour cream/dolphin and tablet desk with leather surface in the colour sand, Work upholstery.



Alcove Highback Cabin Two-Seater with Credo fabric in the colour sand/avocado, Work upholstery. Table with integrated power supply and U-Turn lamp.



Alcove Highback System, configuration with a central element, two side and two corner elements, with Credo cover fabric in the colour salt'n pepper, Lounge upholstery.



The models in the Alcove sofa family with a tubular steel frame and 17 cm floor clearance come in three heights: Lowback (94 cm), Highback (136 cm) and Xtra High (187 cm).



Alcove Plume Contract, which has no tubular steel frame and a low floor clearance, comes in two heights: Lowback (85 cm) and Highback (123 cm).

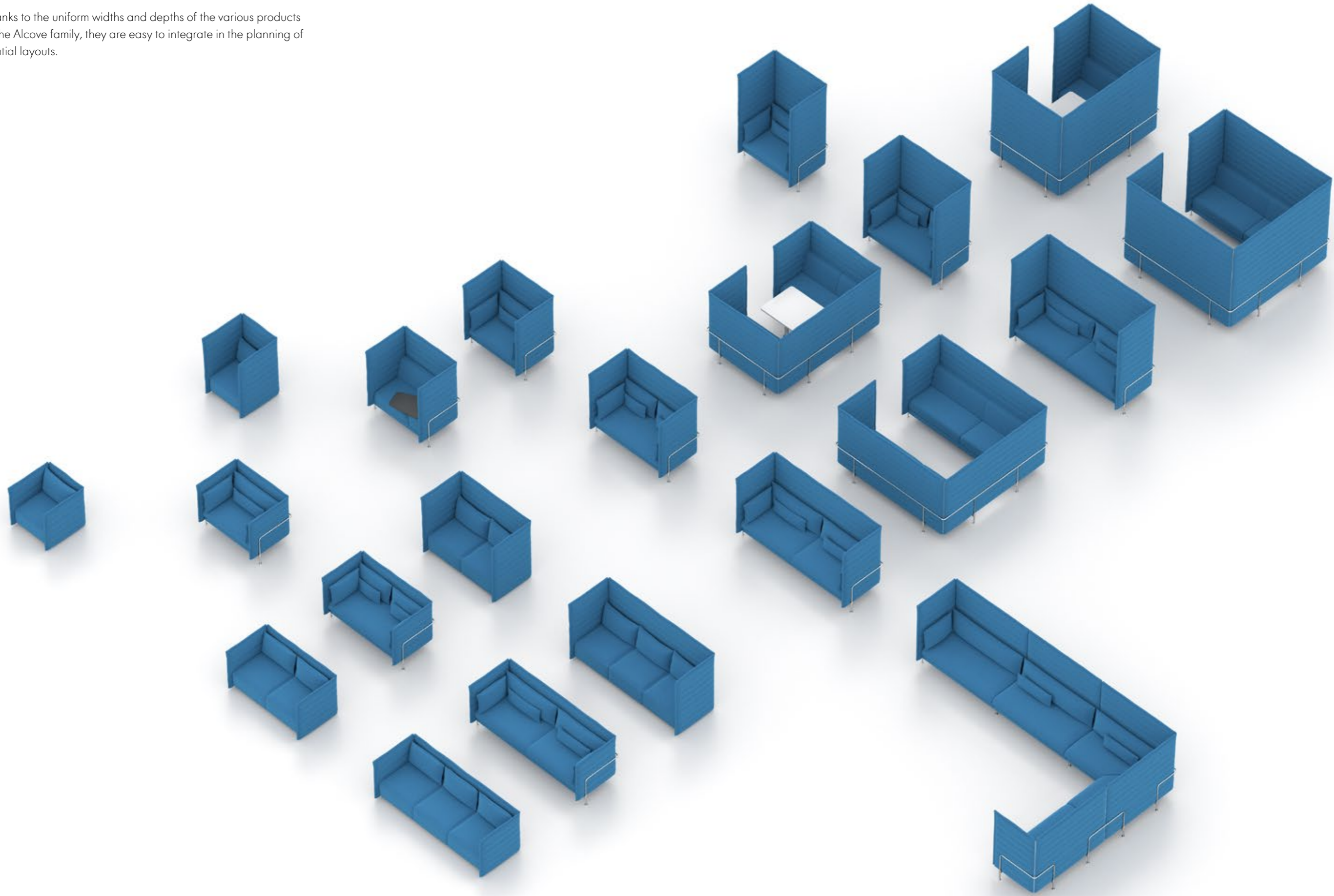
	Lowback	Highback	Xtra High
Alcove Sofa	Love Seat, Two-Seater, Three-Seater	Love Seat, Two-Seater, Three-Seater	Love Seat, Two-Seater, Three-Seater
Alcove Highback Work		Alcove Work	
Alcove Plume Contract	Fauteuil, Two-Seater, Three-Seater	Fauteuil, Two-Seater, Three-Seater	
Alcove Cabin		Two-Seater, Three-Seater	Two-Seater, Three-Seater
Alcove Highback System		All elements	

ACOUSTICS

The quilted side and back panels are a distinguishing characteristic of the various sofas in the Alcove family, helping to shield sitters both visually and acoustically and creating a sense of calm and privacy. The thin panels enable an efficient use of space while inviting users to lean against the softly padded surface and enjoy their flexible support.



Thanks to the uniform widths and depths of the various products in the Alcove family, they are easy to integrate in the planning of spatial layouts.



Alcove Lounge upholstery



Alcove Work upholstery

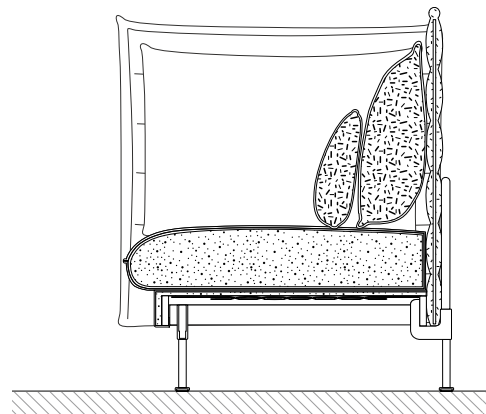


The soft 'Lounge' upholstery offers a relaxing place to sit, enhanced by arm cushions and small back pillows for even greater comfort (seat height 485 mm, 325 mm with applied load).

'Work' upholstery is firmer, providing sufficient support for working in a comfortable upright posture (seat height 480 mm, 385 mm with applied load).

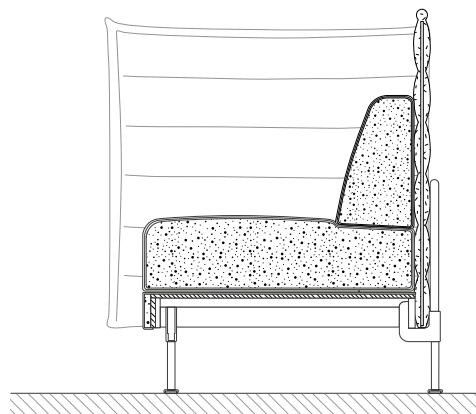
Lounge upholstery

Lounge upholstery has a frame with elastic webbing to provide relaxed sitting. The seat cushions consist of polyurethane foam and polyester fibre; the back cushions are filled with polyurethane chips and microfibre.



Work upholstery

Work upholstery has firmly padded seat and back elements that jointly form a comfortable seat for table-oriented postures and working tasks. The seat cushion rests on a metal frame with an integrated MDF panel; like the backrest, it consists of polyurethane foam and polyester fibre.



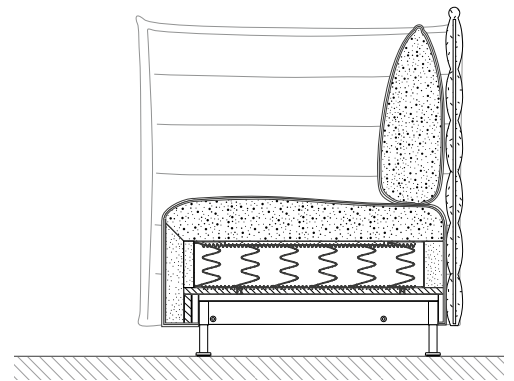
Alcove Plume Contract upholstery



The plush cushions of Alcove Plume are slightly rounded to offer the soft, casual comfort of a lounge sofa (seat height 410 mm, 310 mm with applied load).

Alcove Plume Contract upholstery

The Bonnell spring core is sheathed in a textile fibre-composite mat and covered with layers of polyurethane foam in different densities to provide excellent comfort. The seat modules are supported by MDF base panels. The back cushions are composed of polyurethane foam and polyester fleece.



Alcove, Alcove Highback, Alcove Xtra High Sofa

vitra.

Ronan & Erwan Bouroullec, 2006/2012



Alcove Love Seat, Alcove Xtra High Two-Seater and Alcove Highback Three-Seater

A sofa can go beyond being a mere piece of furniture to become a room within a room.

This was the idea that inspired Ronan and Erwan Bouroullec in their design of the Alcove Sofa.

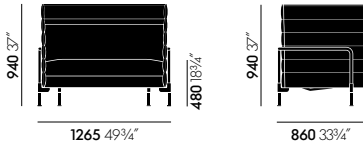
With its comfortable seat and backrest upholstery and the high, flexible side and back panels, the Alcove Sofa forms the basis for the entire Alcove family.

The fundamental concept behind the Alcove product line – creating places of shelter and seclusion – is especially evident in the Alcove Highback Sofa. With its high side and back panels, the Alcove Highback Sofa shields users both visually and acoustically from the surrounding environment. It offers a space for withdrawal and privacy. Thanks to the excellent acoustic qualities and its function as a visual screen, the Alcove Highback Sofa provides a truly peaceful oasis. This effect is even more pronounced when two sofas are positioned across from each other to form a room-like space.

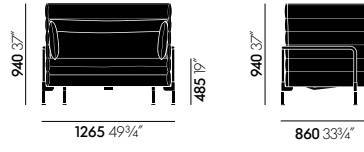
The Alcove Xtra High Sofa has extremely high side and back panels that further amplify the function of protective enclosure common to all Alcove models.

Materials

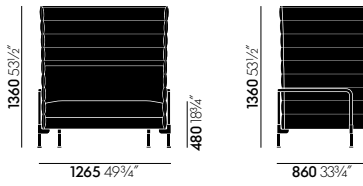
- **Structural frame:** tubular steel, chrome-plated or powder-coated (smooth); metal frame with upholstery webbing (lounge upholstery) or MDF base board (work upholstery).
- **Body:** back and side panels with integrated MDF boards for structural support, panel sections connected with zip fasteners.
- **Upholstery/seat:** polyurethane foam and polyester fibre. Alcove sofas come in two different upholstery versions: soft 'lounge upholstery' for relaxed sitting and firmer 'work upholstery' for work-oriented sitting with various seat heights. Lounge upholstery = 485 mm (measured according to EN 1335-1 = 325 mm), work upholstery = 480 mm (measured according to EN 1335-1 = 385 mm).
- **Covers:** removable.
- **Back cushions and cushion set:** polyurethane chips and microfibre filling. The cushion set is sold separately.
- **Legs:** tubular steel, chrome-plated or powder-coated (smooth).
- **Alcove Love Seat:** incl. 1 back cushion.
- **Cushion set for Love Seat:** 2 armrest cushions and 1 small back cushion.
- **Alcove two- and three-seater:** incl. 2 back cushions.
- **Cushion set for two- and three-seaters:** 2 armrest cushions and 2 small back cushions.



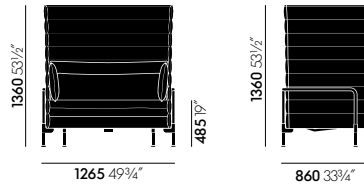
Alcove Love Seat (Work Upholstery)



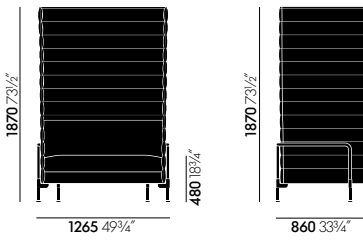
Alcove Love Seat (Lounge Upholstery)



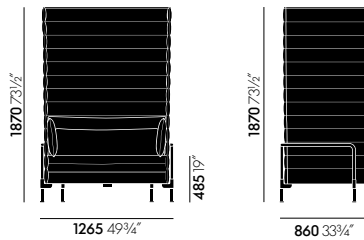
Alcove Highback Love Seat
(Work Upholstery)



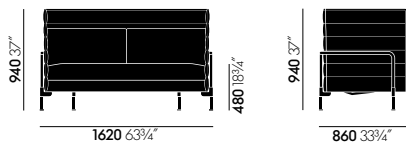
Alcove Highback Love Seat
(Lounge Upholstery)



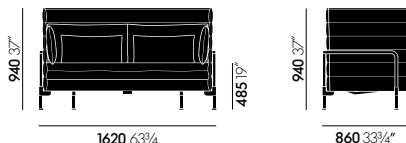
Alcove Xtra High Love Seat
(Work Upholstery)



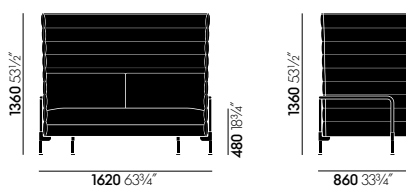
Alcove Xtra High Love Seat
(Lounge Upholstery)



Alcove Two-Seater (Work Upholstery)



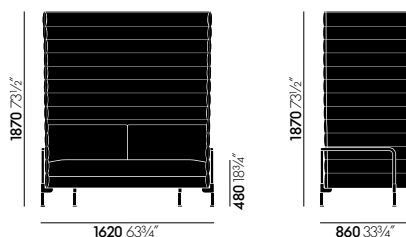
Alcove Two-Seater (Lounge Upholstery)



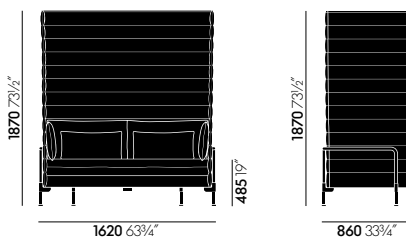
Alcove Highback Two-Seater
(Work Upholstery)



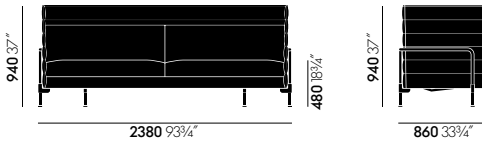
Alcove Highback Two-Seater
(Lounge Upholstery)



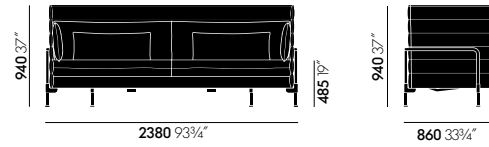
Alcove Xtra High Two-Seater
(Work Upholstery)



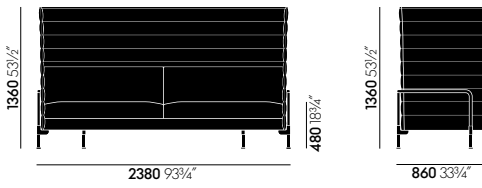
Alcove Xtra High Two-Seater
(Lounge Upholstery)



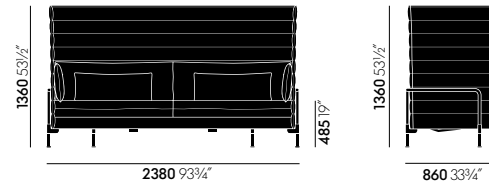
Alcove Three-Seater (Work Upholstery)



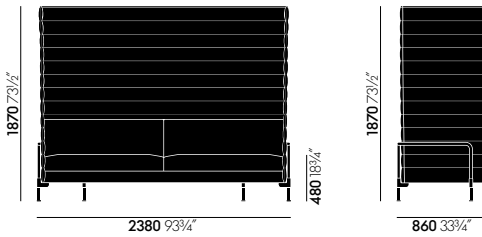
Alcove Three-Seater (Lounge Upholstery)



Alcove Highback Three-Seater
(Work Upholstery)



Alcove Highback Three-Seater
(Lounge Upholstery)



Alcove Xtra High Three-Seater
(Work Upholstery)



Alcove Xtra High Three-Seater
(Lounge Upholstery)

Alcove Plume Contract

Ronan & Erwan Bouroullec, 2015

vitra.



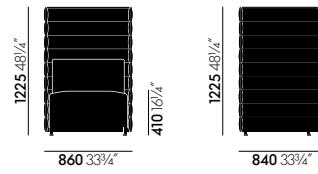
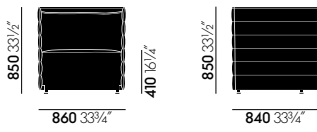
Alcove Plume Contract Two-Seater, Alcove Plume Contract Highback Fauteuil and Alcove Plume Contract Highback Three-Seater

Alcove Plume Contract dispenses with visible legs and an external tubular steel frame, which emphasises its reductive design and almost makes it appear like a minimalist sculpture. As cubic architectural elements in two different heights, the various models of this sofa can be used to structurally organise an interior space. In contrast to their emphatically linear contours, they offer the

soft comfort of a lounge sofa and bring a sense of cosiness to offices and public areas. Alcove Plume Contract Highback, in particular – due to its high back and side panels – creates an inviting place to withdraw, while two facing sofas form a comfortable meeting area.

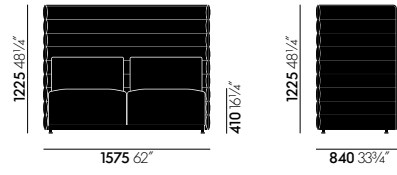
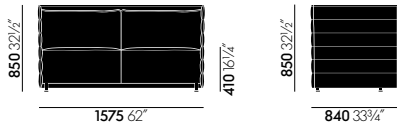
Materials

- **Structural frame:** powder-coated steel, no external tubular frame.
- **Back and side panels:** integrated MDF panels for structural support; panel elements connected by zip fasteners.
- **Seat cushion:** multilayer PU foam upholstery with Bonnell spring core. The seat cushions can be individually detached and the fabric seat covers are removable. Seat height 410 mm (measured according to EN 1335-1 = 310 mm).
- **Back cushions:** filled with PU foam and PE fleece.
- **Legs:** tubular steel, chrome-plated or powder-coated (smooth).



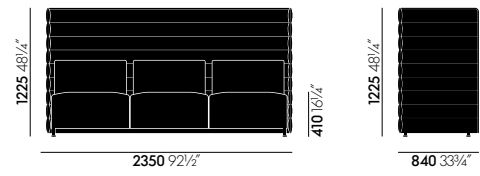
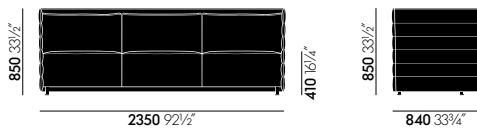
Alcove Plume Contract Fauteuil

Alcove Plume Contract Highback Fauteuil



Alcove Plume Contract Two-Seater

Alcove Plume Contract Highback Two-Seater



Alcove Plume Contract Three-Seater

Alcove Plume Contract Highback Three-Seater

Alcove Highback Work

Ronan & Erwan Bouroullec, 2010

vitra.



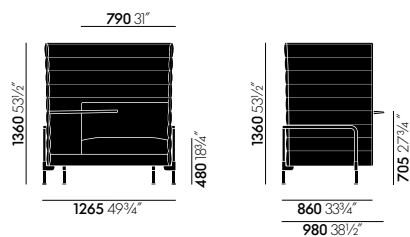
Alcove Highback Work

The fundamental idea behind the Alcove product family - providing places of shelter and seclusion - also applies to Alcove Highback Work: it shields users both visually and acoustically from the surrounding environment, forming a space for withdrawal. With its integrated tablet desk, storage box and cable inlet, Alcove Highback Work offers a flexible and private workspace in the open-plan office for individual tasks requiring concentration.

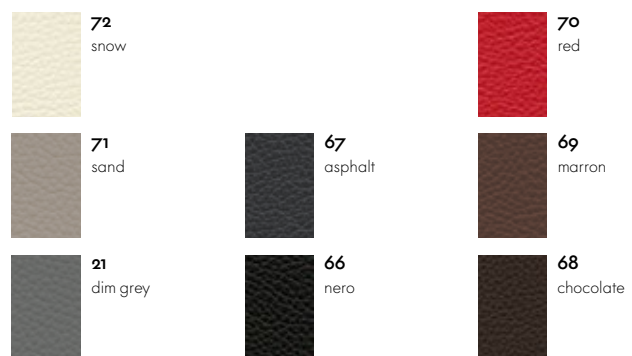
Materials

- **Structural frame:** tubular steel, chrome-plated or powder-coated (smooth), metal frame with MDF panel.
- **Body:** high back and side panels form a visual and acoustic shield, integrated MDF boards for structural support, panel sections connected with zip fasteners.
- **Seat and back cushions:** polyurethane foam and polyester fibre. Work upholstery for work-oriented sitting, 480 mm (measured according to EN 1335-1 = 385 mm).
- **Box:** MDF carcass covered in polyurethane foam.
- **Legs:** tubular steel, chrome-plated or powder-coated (smooth).
- **Tablet desk:** two bonded MDF panels, covered in leather.

DIMENSIONS



Alcove Highback Work, armrest left, sitting right (o2/L)



Leather (shelf Highback Work)

Alcove Cabin

Ronan & Erwan Bouroullec, 2012

vitra.



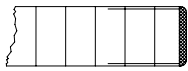
Alcove Cabin Xtra High Two-Seater and Alcove Cabin Highback Two-Seater

Alcove Cabin creates a secluded space, which is enclosed on all sides and accessible through a single opening. It provides visual and acoustic privacy for four to six people – especially the version with extra-high side walls. On the inside, Alcove

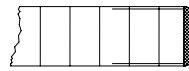
Cabin has facing upholstered seats and can be optionally equipped with a table, power connections and lighting to serve as a full-fledged workspace.

Materials

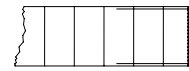
- **Structural frame:** tubular steel, chrome-plated or powder-coated (smooth), metal frame with MDF panel.
- **Body:** back and side panels with integrated MDF boards, connecting panel with integrated MDF board and metal structure, panel sections connected with zip fasteners.
- **Upholstery/seat and backrest:** polyurethane foam and polyester fibre. Work upholstery for work-oriented sitting, 480 mm (measured according to EN 1335-1 = 385 mm).
- **Covers:** removable.
- **Legs:** tubular steel, chrome-plated or powder-coated (smooth).
- **Table top:** powder-coated MDF, oak veneer.
- **Table leg:** tubular steel, chrome finish.



MDF powder-coated in soft light
25 mm thick



Veneer in light oak
25 mm thick



Veneer in dark oak
25 mm thick

ELECTRIFICATION



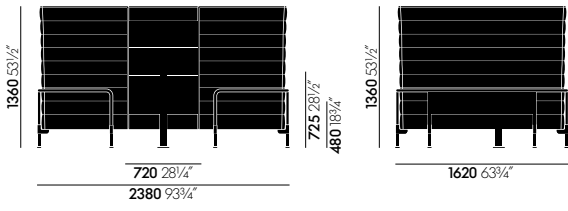
Port 180 provides two power outlets and a central attachment point for accessories.



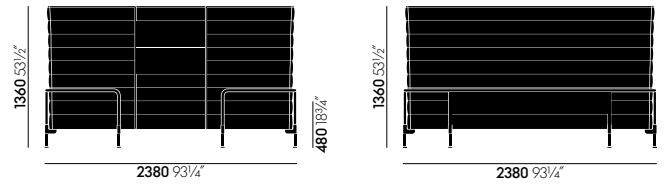
Port 180 is equipped with power and data connections.



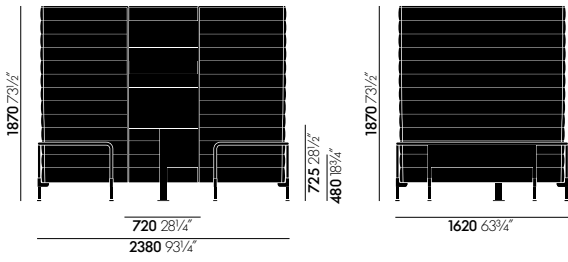
Port 180 has power outlets on both sides.



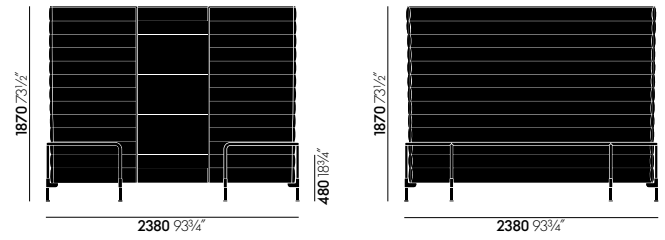
Alcove Cabin Highback Two-Seater



Alcove Cabin Highback Three-Seater



Alcove Cabin Xtra High Two-Seater



Alcove Cabin Xtra High Three-Seater

Alcove Highback System

Ronan & Erwan Bouroullec, 2006

vitra.



Alcove Highback System

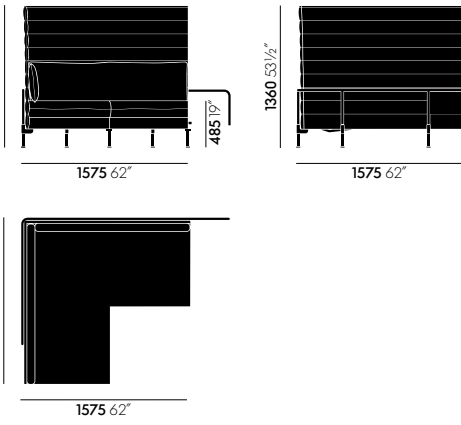
Alcove Highback System elements can be combined to form individual configurations of a great range of shapes and sizes. The modular system is made up of three different elements: corner sections, middle sections and side sections (right

and left). These allow the formation of sofa clusters that are perfectly tailored to the needs of each setting – whether it is an office, lobby, reception or waiting area.

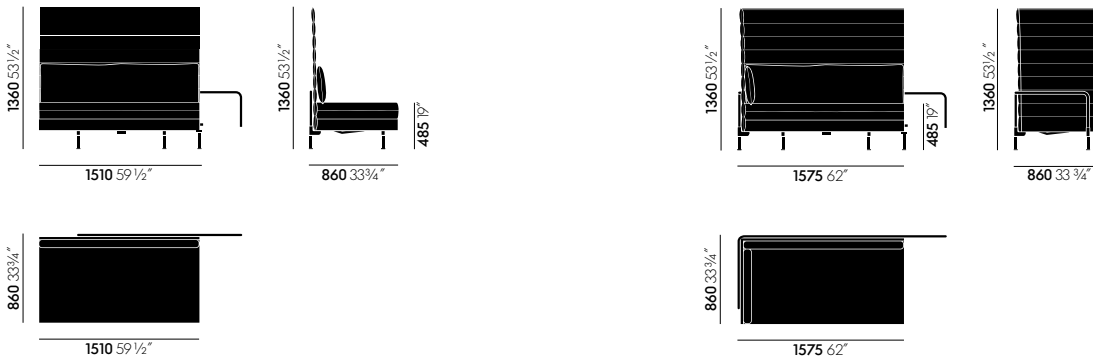
Materials

- **Structural frame:** tubular steel, chrome-plated or powder-coated (smooth), metal frame with upholstery webbing.
- **Body:** high back and side panels form a visual and acoustic shield, integrated MDF panels for structural support, panel sections connected with zip fasteners.
- **Upholstery/seat:** polyurethane foam and polyester fibre. Lounge upholstery for relaxed sitting, 485 mm (measured according to EN 1335-1 = 325 mm).
- **Back cushions and cushion set:** polyurethane chips and microfibre filling. The cushion set is sold separately.
- **Covers:** removable.
- **Legs:** tubular steel, chrome-plated or powder-coated (smooth), levelling adjustment.

DIMENSIONS

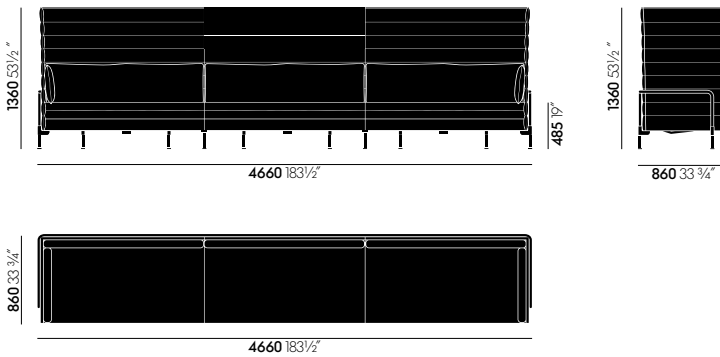


Alcove Highback System, corner element

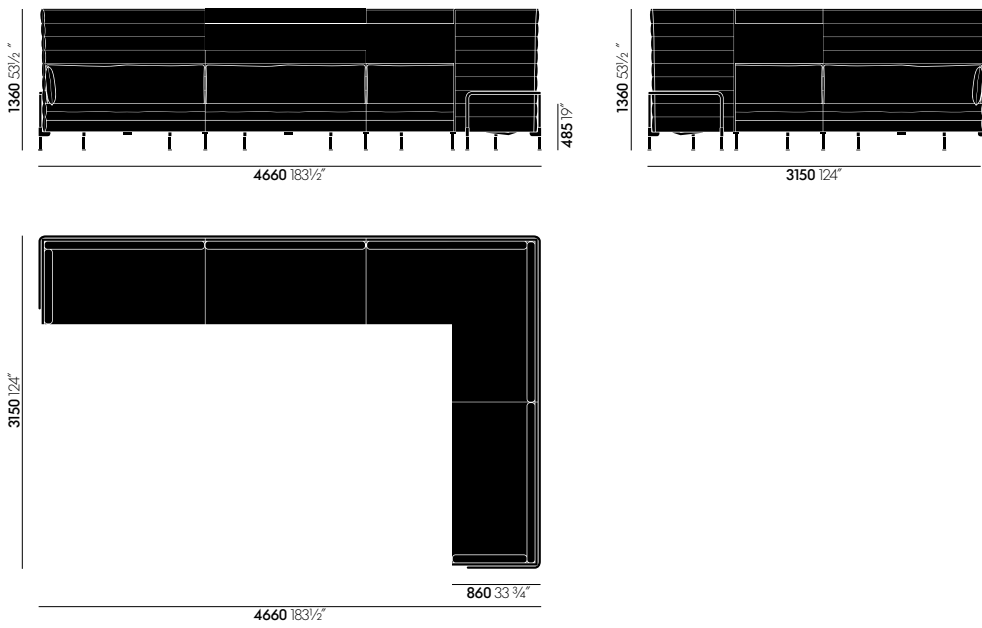


Alcove Highback System, central element

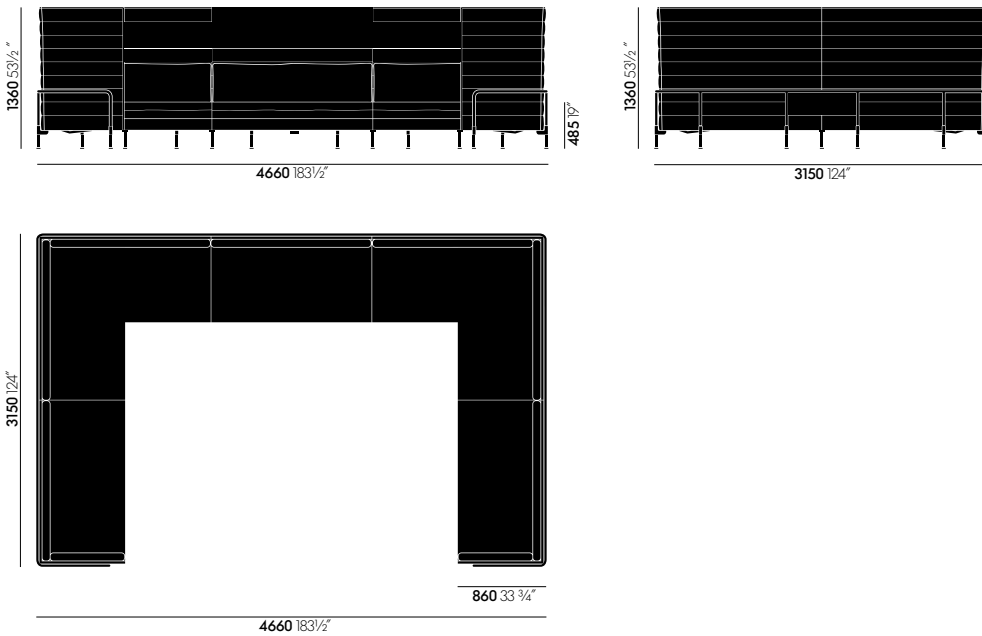
Alcove Highback System, side element



Alcove Highback System, I-configuration



Alcove Highback System, L-configuration



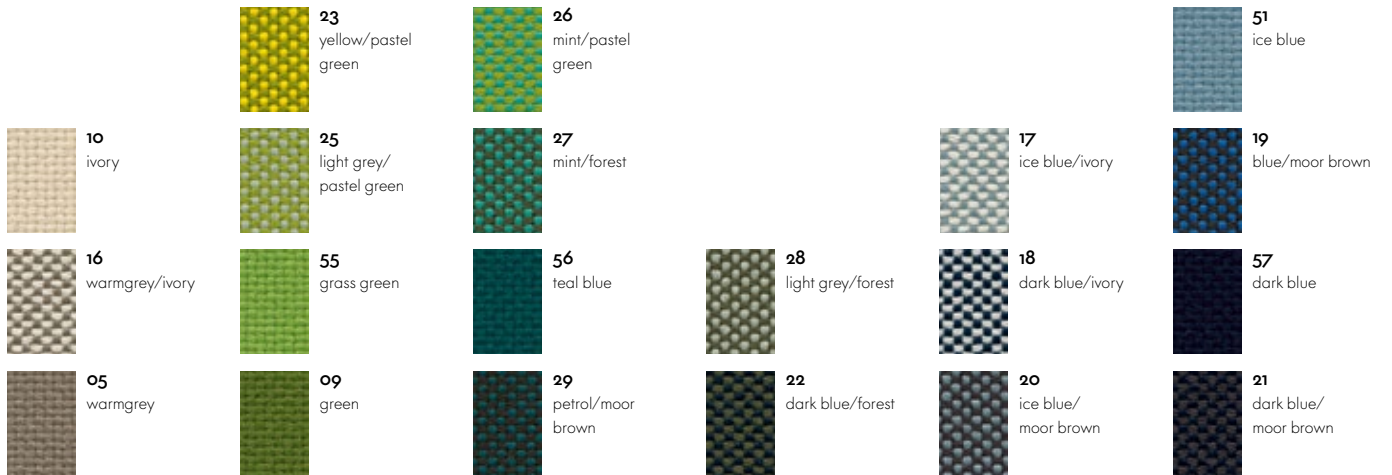
Alcove Highback System, U-configuration



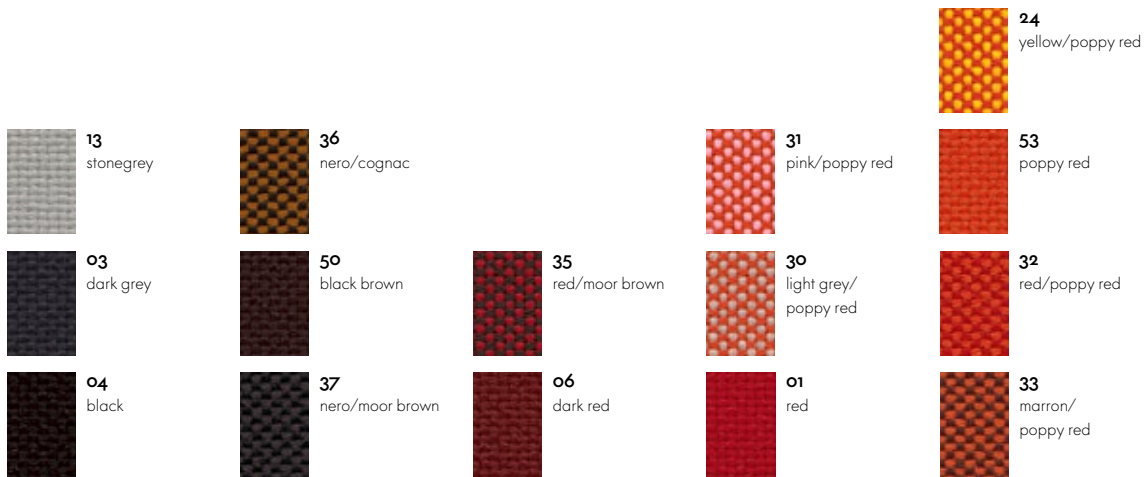
Laser

100% Trevira CS polyester | 520 gr/m²

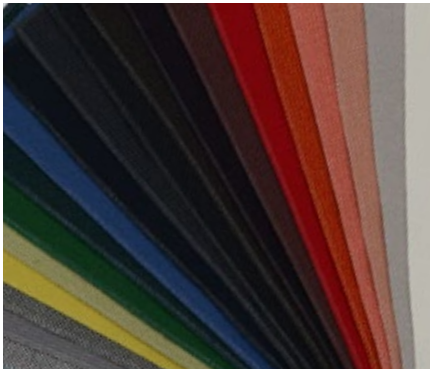
With its distinctive woven structure, Laser makes a robust and striking cover fabric. The varied palette offers a wide selection of colours, with the duotones showing off the woven structure to even greater advantage. Practical and easy to care for, as well as durable and highly abrasion-resistant, Laser is also well suited for office environments. Laser is available in 35 colours.



Laser



Laser



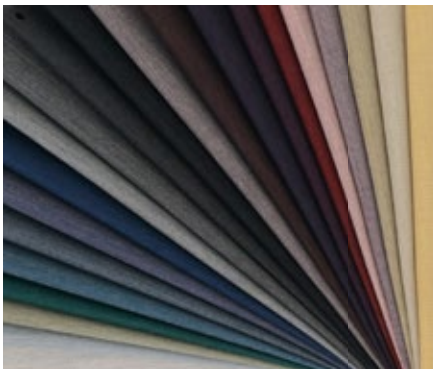
Credo

95 % new wool, 5 % polyamide | 640 gr/m²

Credo is a durable woollen fabric made of premium worsted yarn with a pleasant feel. The two- and three-tone colours give this fabric a characteristic structure and vibrant appearance. Credo allows for an effective exchange of heat to ensure comfortable thermal conditions for the sitter. The fabric can also be used in office environments. Credo is available in 22 colours.



Credo

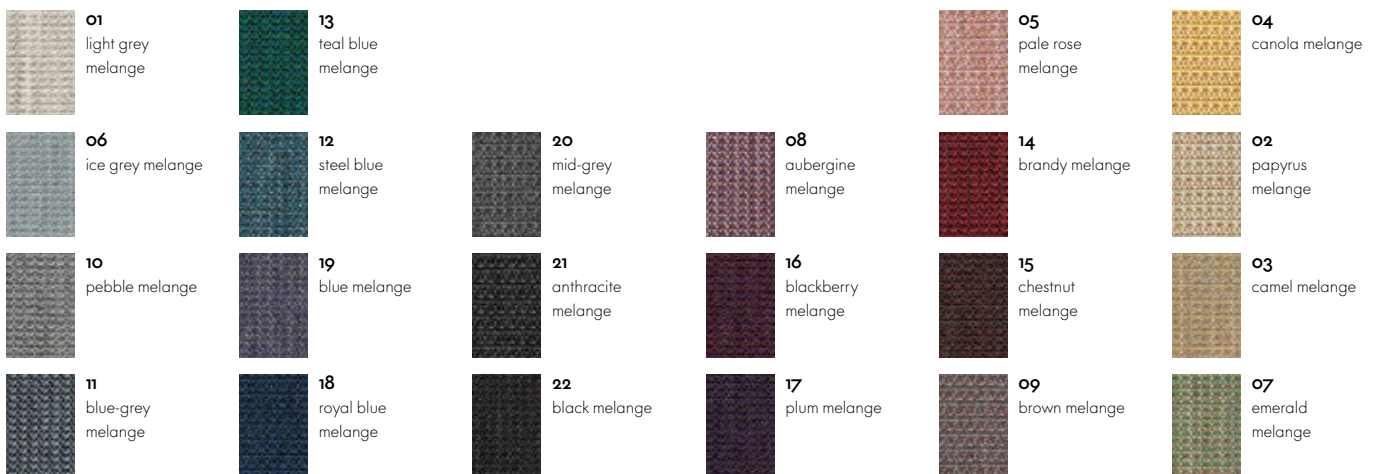


Tress

8% polyamide, 19% polyester, 73% new wool | 310 gr/m²

Tress is a flat woven fabric with a lively appearance that derives from the contrast between its even structure and the natural melange of colours. The combination of yarns with varied hues creates a harmonious and yet vibrant look. Thanks to its high wool content, Tress is a durable, easy-care material with a home-like aesthetic.

Tress is available in 22 colours.



Tress

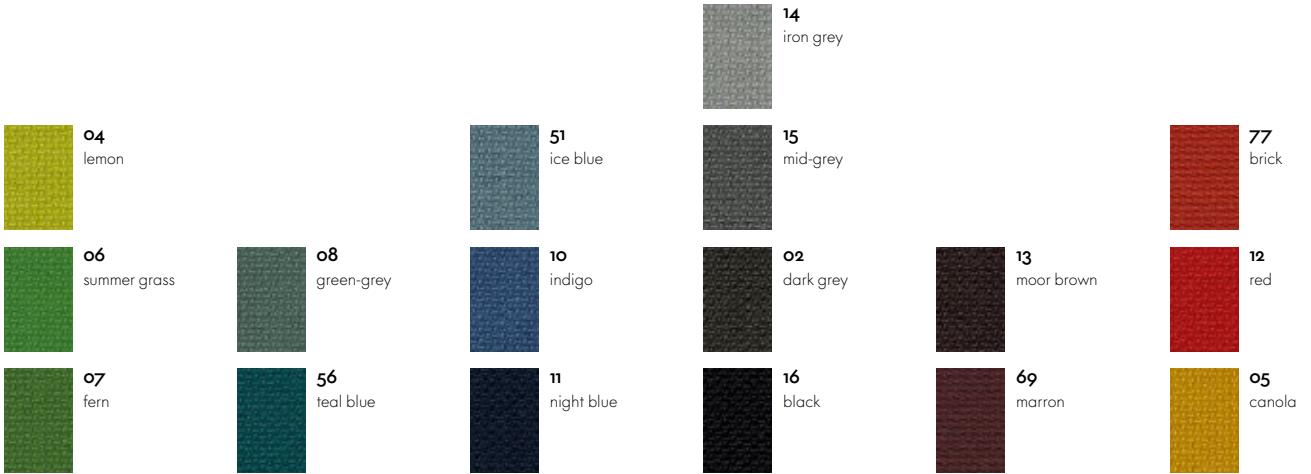


Volo

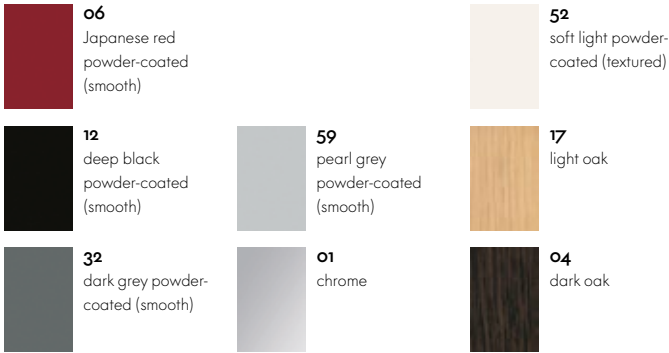
85% new wool, 15% polyamide | 435 gr/m²

Volo is a finely structured wool blend with a refined weave that gives it an elegant appearance. This expressive textile shows strong solid colours to full advantage while simultaneously offering pleasant tactile qualities. With its soft look and appealing texture, Volo is a perfect fit for home interiors, but it is also well suited for use in the contract sector.

Volo is available in 17 colours.



Volo



Tubular steel frame

Table top

Vitra has over fifty years of experience in the production of upholstered furniture. Premium materials, skilled craftsmanship and high quality standards at Vitra are a guarantee for long-lasting products. In Vitra's own test centre, our upholstered furnishings are regularly subjected to rigorous tests that far exceed common standards.

Care instructions:

Exposure to direct sunlight should be avoided, since ultraviolet rays can cause cover materials to fade.

To retain the original fullness and shape of your sofa, cushions should be regularly shaken and plumped.

Folds and creases from sitting can be prevented in all types of upholstery by smoothing the cover material after use.

USEFUL FACTS ABOUT COVER MATERIALS

Cover fabrics have a decisive influence on the appearance and characteristics of upholstered furniture. Technical properties such as resistance to abrasion, fading or stains play an important role, along with the quality of fibres, weaving technique and aesthetic features of the textile.

Function and performance are primarily determined by the type of fabric used. In general, synthetic fibres are superior to natural fibres in terms of their technical characteristics. For this reason, blends of different materials are employed to combine the advantages of the individual fibres.

Following, you will find some of the key features of the textiles used by Vitra in its upholstery covers:

Cotton (CO)

Skin-friendly natural fibre of plant origin, pleasant tactile qualities, readily absorbs moisture. Often inferior to synthetic fibres with regard to colourfastness and light resistance; flat weaves susceptible to pilling.

Linen (LI)

Natural fibre of plant origin with slight lustre, cool and comfortable, repels dirt, no pilling. Limited colourfastness to light and crocking, creases easily.

Wool (WO)

Elastic natural fibre of animal origin, naturally self-cleaning – a brief airing disperses absorbed odours, leaving the wool smelling neutral and fresh again. Good resistance to light and abrasion, highly absorbent, minimal creasing, low flammability. Subject to pilling and matting.

Polyester (PE), Polyacrylic (PA), Viscose (VI)

Synthetic, highly uniform, lightfast fibres. The non-absorbent properties of synthetics can be mitigated with fibre blends and weaving techniques.

The overall look of a piece of furniture is influenced by the colour and type of cover fabric, its properties (elastic or non-stretch) as well as the upholstery technique (removable or attached covers). Consequently, a sofa can take on a different appearance depending on the cover material. Generally speaking, cover fabrics with some elasticity are less susceptible to creases and puckering, since they have an adaptable fit on three-dimensional forms. Heavier cover materials such as Over, Laser or Credo drape more smoothly, while thinner materials exhibit a finer rippling effect.

Care instructions:

All Alcove covers are removable. Fabric covers can be professionally dry cleaned. Prior to treatment, please be sure to note the material composition of the cover fabric.

Should you ever need to replace individual parts or covers due to wear and tear, please contact your local Vitra retailer.

